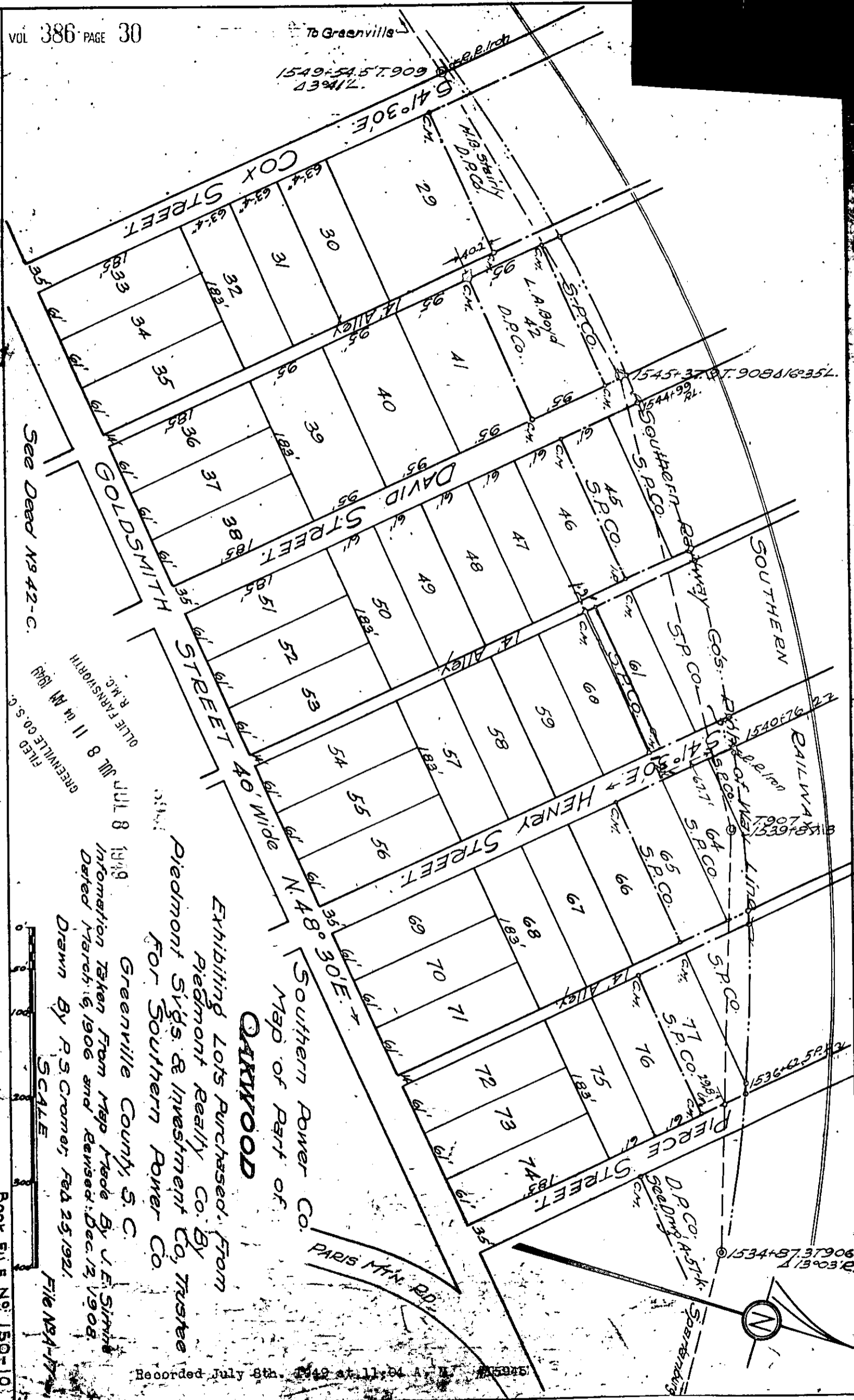


To Greenville  
1549+54.57.909  
139417



See Deed N9 42-C.

FILED  
GREENVILLE CO. S. C.  
JUL 8 1919  
OLLE F. KINSORTH  
R. M. G.

Exhibiting Lots Purchased From  
Piedmont Realty Co. By  
Piedmont Sigs. & Investment Co. Trustee  
FOR Southern Power Co.

### CARYWOOD

Southern Power Co.  
MAP OF PART OF

Greenville County, S. C.

Information Taken From Map Made By J. E. Smith  
Dated March 6, 1906 and Revised Dec. 12, 1908.

Drawn By P. S. Cromer, Feb 25, 1921.

File N9 A-174



BOOK FILE N9 150-10

Book with in L & Sigs see lots at numbered no 8